

FOAM COLORS

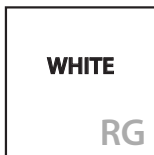
#03 NATURAL PMS 607U	#20 BLACK PMS BLACKU	#13 GRAY PMS 415U	#17 PURPLE PMS 2617U	#19 ROYAL (DK.) BLUE PMS 2945U	#34 NAVY PMS 282U	#36 TURQUOISE PMS 3295U
#11 (DK.) GREEN PMS 3425U	#38 SPRING GREEN PMS 354U	#91 NEON GREEN PMS 367U	#30 YELLOW PMS 109U	#22 BURGUNDY PMS 228U	#07 RED PMS 193U	#90 NEON PINK PMS 205U
#48 FUCHSIA PMS 221U	#14 ORANGE PMS 1665U	#92 NEON BLUE PMS 2985U	#94 PEACH PMS 170U			



Please be aware that computer screens and color printers vary in color settings.
Consult a PMS color book for closer match. REV 3.18

GRIP-IT AND FOAM INK

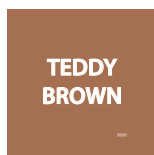
FOR C450 GRIP IT, C455 16OZ SPORT BOTTLE, AND C464 32OZ BIG MOUTH BOTTLE



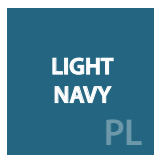
PMS WHITE



PMS BLACK



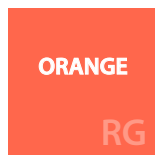
PMS 470U



PMS 308U



PMS 422U



PMS 172U



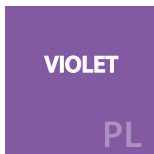
PMS 280U



PMS 300U



PMS 2695U



PMS 2597U



PMS 356U



PMS 102U



PMS 122U



PMS 877U



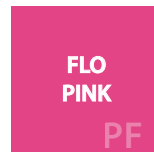
PMS 872U



PMS 2985U



PMS 802U



PMS 812U



PMS 804U



PMS 1655U



PMS 3135U



PMS 340U



PMS 349U



PMS 872U



PMS 186U



PMS RUBINE REDU



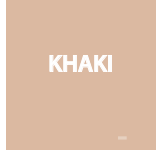
PMS 233U



PMS 1807U



PMS 4625U



PMS 4675U

PF = PUFF

PL = PLASTISOL

RG = REGULAR

Please be aware that computer screens and color printers vary in color settings.

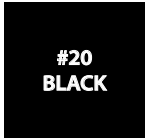
Consult a PMS color book for closer match.

REV 3.18

NEOPRENE & OPEN CELL COLORS



**#01
WHITE**
N= PMS WHITE
OC= PMS WHITE



**#20
BLACK**
N= PMS BLACK
OC= PMS BLACK



**#17
PURPLE**
N= PMS 2617U
OC= PMS 2617U



**#19
ROYAL
BLUE**
N= PMS 286U
OC= PMS 286U



**#34
NAVY**
N= PMS 282U
OC= PMS 282U



**#21
BROWN**
N= PMS 731U
OC= PMS 731U



**#36
TURQUOISE**
N= PMS 327U
OC= PMS 326U



**#11
(FOREST)
GREEN**
N= PMS 336U
OC= PMS 3298U



**#38
KELLY
GREEN**
N= PMS 348U
OC= PMS 355U



**#91
NEON
GREEN**
N= PMS 374U
OC= PMS 374U



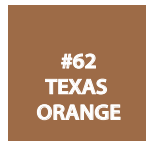
**#30
YELLOW**
N= PMS 107U
OC= PMS 102U



**#39
LIGHT
GOLD**
N= PMS 109U
OC= PMS 109U



**#22
BURGUNDY**
N= PMS 228U
OC= PMS 228U



**#62
TEXAS
ORANGE**
N= PMS 160U
OC= PMS 160U



**#07
RED**
N= PMS 185U
OC= PMS 186U



**#90
NEON
PINK**
N= PMS 212U
OC= PMS 212U



**#48
FUCHSIA**
N= PMS 239U
OC= PMS 240U



**#92
NEON
BLUE**
N= PMS 2995U
OC= PMS 2995U



**#14
ORANGE**
N= PMS ORNG 021U
OC= PMS 151U



**#40
OLIVE
GREEN**
N= PMS 5753U
OC= PMS 5753U



**#41
MINT**
N= PMS 351U
OC= PMS 351U



**#13
GREY**
N= COOL GREY 5U
OC= COOL GREY 5U



**#93
PINK
CAMO**
N= CAMO
OC= CAMO



**#67
TRUE LIFE
CAMO**
N= CAMO
OC= CAMO



**#66
CAMO**
N= CAMO
OC= CAMO

C600 AND C650 ONLY:



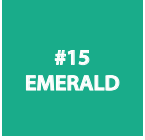
**#09
CERULEAN**
N= PMS 2935U
OC= PMS 2935U



**#10
CORAL**
N= PMS 2029U
OC= PMS 2029U



**#12
DUSTY
ROSE**
N= PMS 692U
OC= PMS 692U



**#15
EMERALD**
N= PMS 339U
OC= PMS 339U



**#16
FROST**
N= PMS 537U
OC= PMS 537U



**#18
CRIMSON**
N= PMS 7622U
OC= PMS 7622U



**#06
CAMEL**
N= PMS 7528U
OC= PMS 7528U



**#31
ORCHID**
N= PMS 252U
OC= PMS 252U



**#32
PEACH**
N= PMS 7410U
OC= PMS 7410U



**#33
PISTACHIO**
N= PMS 7486U
OC= PMS 7486U



**#35
PLACID
BLUE**
N= PMS 543U
OC= PMS 543U



**#37
RASPBERRY**
N= PMS 7648U
OC= PMS 7648U



**#42
ROBIN
EGG BLUE**
N= PMS 318U
OC= PMS 318U



**#43
STRAWBERRY
ICE**
N= PMS 701U
OC= PMS 701U



**#44
TANGERINE**
N= PMS 7625U
OC= PMS 7625U



**#46
TAUPE**
N= PMS 7531U
OC= PMS 7531U



**#47
SAGE**
N= PMS 2262U
OC= PMS 2262U



**#49
SANDSTONE**
N= PMS 7529U
OC= PMS 7529U



**#08
CHARCOAL**
N= PMS 445U
OC= PMS 445U

Please be aware that computer screens and color printers vary in color settings.

Consult a PMS color book for closer match.

REV 3.18

NEOPRENE AND OPEN CELL INK



PMS WHITE



BLACK



PMS 470U



PMS 308U



PMS 422U



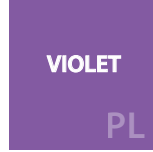
PMS 186U



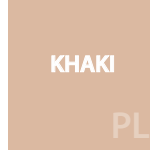
PMS 300U



PMS 2695U



PMS 2597U



PMS 4675U



PMS 356U



PMS 122U



PMS 102U



PMS 877U



PMS 872U



PMS 2985U



PMS 802U



PMS 812U



PMS 804U



PMS 1655U



PMS 3135U



PF = PUFF PL = PLASTISOL

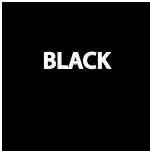
Please be aware that computer screens and color printers vary in color settings.

Consult a PMS color book for closer match.

REV 3.18

INK CHART

The WOODY[™] Can Cooler



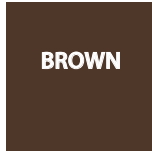
BLACK

PMS BLACK



**ROYAL
BLUE**

PMS 275C



BROWN

PMS 476C



**DARK
GREEN**

PMS 343C



PURPLE

PMS 268C



**EMERALD
GREEN**

PMS 341C



RED

PMS 187C



TEAL

PMS 316C



**REFLEX
BLUE**

PMS 280C



**ARMY
GREEN**

PMS 5477C



**MEDIUM
GREEN**

PMS 560C



BURGUNDY

PMS 195C



**DARK
BLUE**

PMS 540C



**BURNT
ORANGE**

PMS 159C

REGULAR (FLAT) INK



Please be aware that computer screens and color printers vary in color settings.
Consult a PMS color book for closer match.

REV 3.18

POLY INK

FOR C120 POLY PARTY CUP, C200 FLYER AND C130 STEMLESS WINE GLASS



WHITE

PMS WHITE



BLACK

PMS BLACK



BROWN

PMS 161C



GREEN

PMS 356C



YELLOW

PMS 109C



**REFLEX
BLUE**

PMS 281C



**ROYAL
BLUE**

PMS 280C



**PROCESS
BLUE**

PMS 301C



BLUE

PMS 293C



ORANGE

PMS 172C



PURPLE

PMS 2607C



MAGENTA

PMS 207C



RHODAMINE

PMS 221C



**DEEP
RED**

PMS 200C



RED

PMS 187C

REGULAR (FLAT) INK

Please be aware that computer screens and color printers vary in color settings.

Consult a PMS color book for closer match.

REV 3.18

PAD PRINT INK

FOR C110 WATERBOX



PMS WHITE



PMS BLACK



PMS 186C



PMS 201C



PMS 214C



PMS 3415C



PMS 306C



PMS 101C



PMS 285C



PMS 280C



PMS 289C

REGULAR (FLAT) INK

Please be aware that computer screens and color printers vary in color settings.

Consult a PMS color book for closer match.

REV 3.18